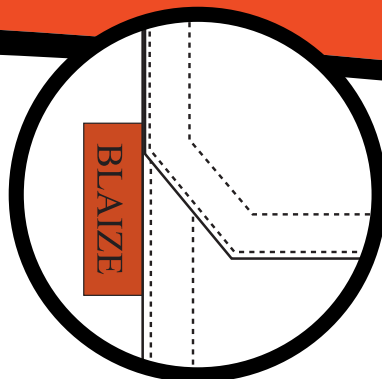




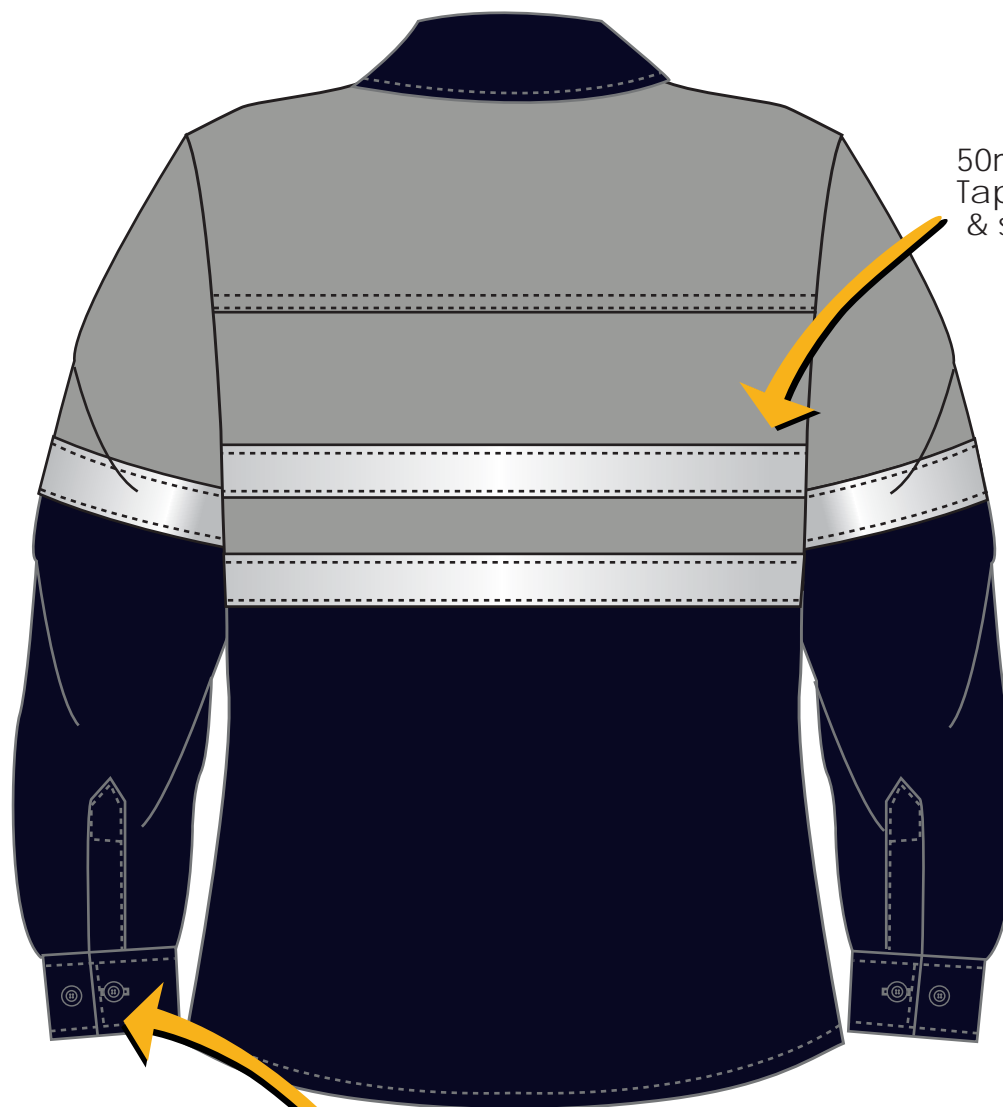
**YELLOW & ORANGE SHIRT**



**WORK SHIRT**



Branded sidewinder on Patch pocket



50mm reflective Tape on front, back & sleeve

### TEXTILE

2/1 TWILL  
100% COTTON  
UV PROTECT  
135gsm

### COLOURS

- NAVY/GREY
- NAVY/YELLOW
- NAVY/ORANGE

Cuff & gauntlet fastening

NAVY/GREY SHIRT

WORK SHIRT



## CONSTRUCTION

<b>FRONTING:</b>	B.R.H.S 2,5cm FOLD L.H.S FRENCH FOLD
<b>BACK:</b>	LAYED ON YOKE WITH MESH UNDERNEATH, OPENED VENTS. BARTACKED 5cm FROM SIDES & CENTRE
<b>COLLAR:</b>	DOUBLE STITCHED
<b>CUFF:</b>	DOUBLE STITCHED x 2, BUTTONS X 2
<b>POCKETS:</b>	DOUBLE STITCHED POCKETS X 2, MITRED
<b>FLAPS:</b>	DOUBLE STITCHED FLAPS X 2, MITRED
<b>SLEEVE:</b>	GAUNTLET AND CUFF
<b>LOOP:</b>	8CM FINISH IN LENGTH AT CENTRE BACK
<b>POSTING:</b>	SHOULDER, ARMHOLE, UNDERARM, SLEEVE & SIDE SEAM
<b>REFLECTIVE TAPE:</b>	ACROSS FRONTS, BACKS, POCKETS & SLEEVES

## MEASUREMENTS

DESCRIPTION	XS	S	M	L	XL	2XL	3XL	4XL	5XL
CHEST LENGTH	106	114	122	130	138	146	154	162	170
BACK LENGTH	80	82	84	86	88	90	92	94	96
SLEEVE LENGTH	64	65	66	67	68	69	70	71	72
CUFF	25	26	27	28	29	30	31	32	33

# WORK SHIRT



## LABELS

WASH CARE:	BELOW LABEL
I.D LABELS:	BELOW LABEL
NECK LABEL:	CENTRE BACK BELOW LOOP. 3.5cm FROM NECK
SIZE TAG:	BELOW LABEL
C.D LUX:	R.H.S UNDER BOTTOM TAPE blz 380 CD
BUTTONS:	MATCHING, AS PER SAMPLE
SIDEWINDER:	L.H.S POCKET



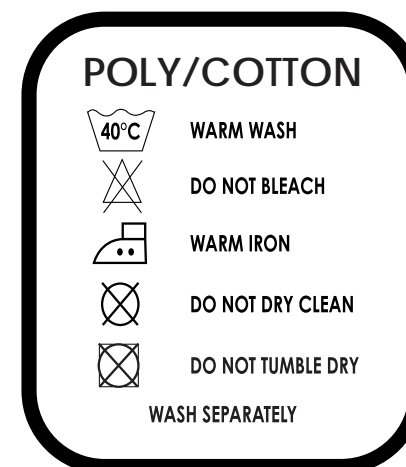
BACK NECK LABEL  
3cm x 3.5cm



SWINGTAG - 8cm x 5cm



SIDEWINDER  
3cm X 2cm



WASHCARE LABEL  
3.5cm X 2.5cm

# WORK SHIRT