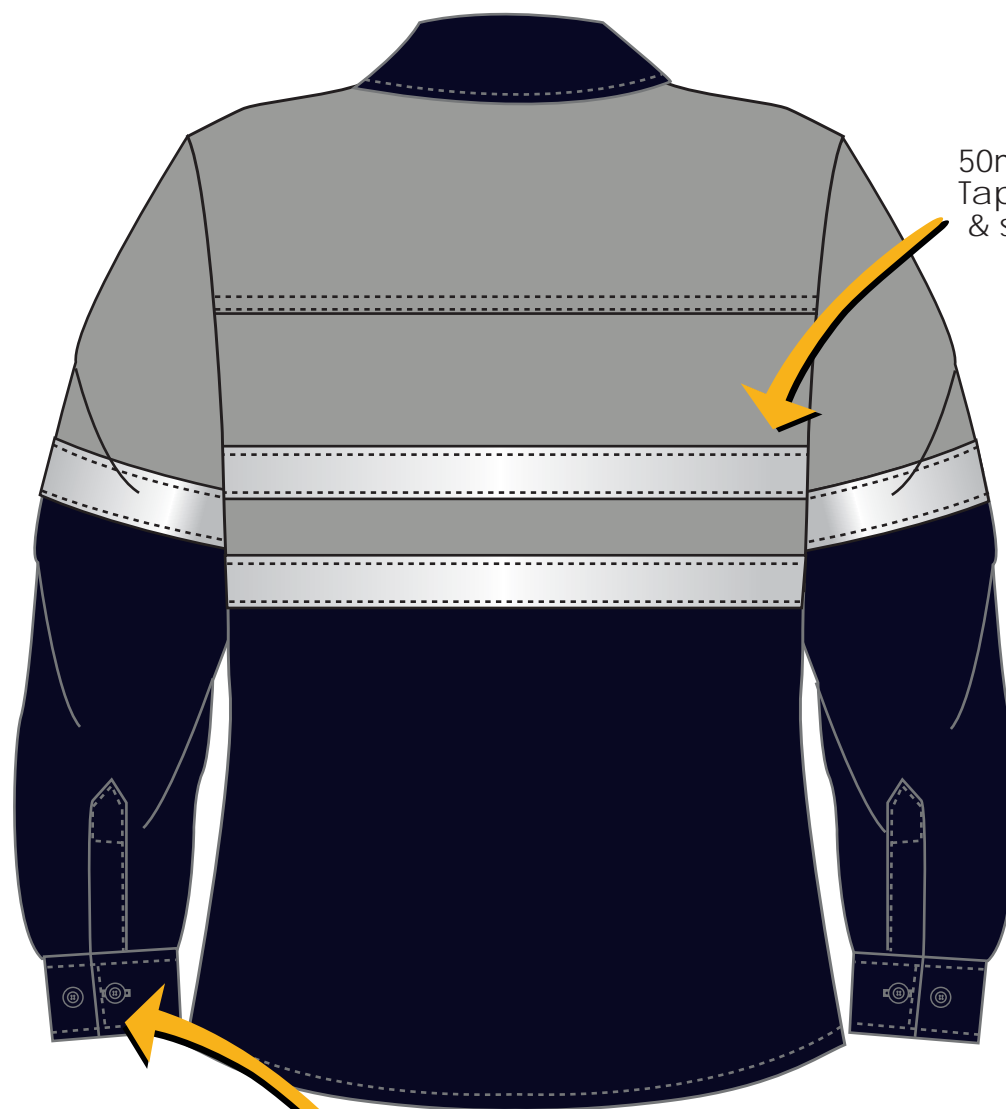


Branded sidewinder on Patch pocket



50mm reflective Tape on front, back & sleeve

TEXTILE

2/1 TWILL
100% COTTON
220gsm

COLOURS

- NAVY/GREY
- NAVY/YELLOW
- NAVY/ORANGE

Cuff & gauntlette fastening

NAVY/GREY SHIRT

Work Pull Over Shirt



YELLOW & ORANGE SHIRT

Work Pull Over Shirt



CONSTRUCTION

FRONTING:	R.H.S 2,5cm FOLD L.H.S FRENCH FOLD
BACK:	LAYED ON YOKE WITH MESH UNDERNEATH, OPENED VENTS. BARTACKED 5cm FROM SIDES & CENTRE
COLLAR:	DOUBLE STITCHED
CUFF:	DOUBLE STITCHED x 2, BUTTONS X 2
POCKETS:	DOUBLE STITCHED POCKETS X 2, MITRED
FLAPS:	DOUBLE STITCHED FLAPS X 2, MITRED
SLEEVE:	GAUNTLET AND CUFF
LOOP:	8CM FINISH IN LENGTH AT CENTRE BACK
POSTING:	SHOULDER, ARMHOLE, UNDERARM, SLEEVE & SIDE SEAM
REFLECTIVE TAPE:	ACROSS FRONTS, BACKS, POCKETS & SLEEVES

MEASUREMENTS

DESCRIPTION	XS	S	M	L	XL	2XL	3XL	4XL	5XL
CHEST LENGTH	106	114	122	130	138	146	154	162	170
BACK LENGTH	80	82	84	86	88	90	92	94	96
SLEEVE LENGTH	64	65	66	67	68	69	70	71	72
CUFF	25	26	27	28	29	30	31	32	33

Work Pull Over Shirt



LABELS

WASH CARE:	BELOW LABEL
I.D LABELS:	BELOW LABEL
NECK LABEL:	CENTRE BACK BELOW LOOP. 3.5cm FROM NECK
SIZE TAG:	BELOW LABEL
C.D LUX:	R.H.S UNDER BOTTOM TAPE blz 380 CD
BUTTONS:	MATCHING, AS PER SAMPLE
SIDEWINDER:	L.H.S POCKET



BACK NECK LABEL
3cm x 3.5cm



SWINGTAG - 8cm x 5cm



SIDEWINDER
3cm X 2cm



WASHCARE LABEL
3.5cm X 2.5cm

Work Pull Over Shirt