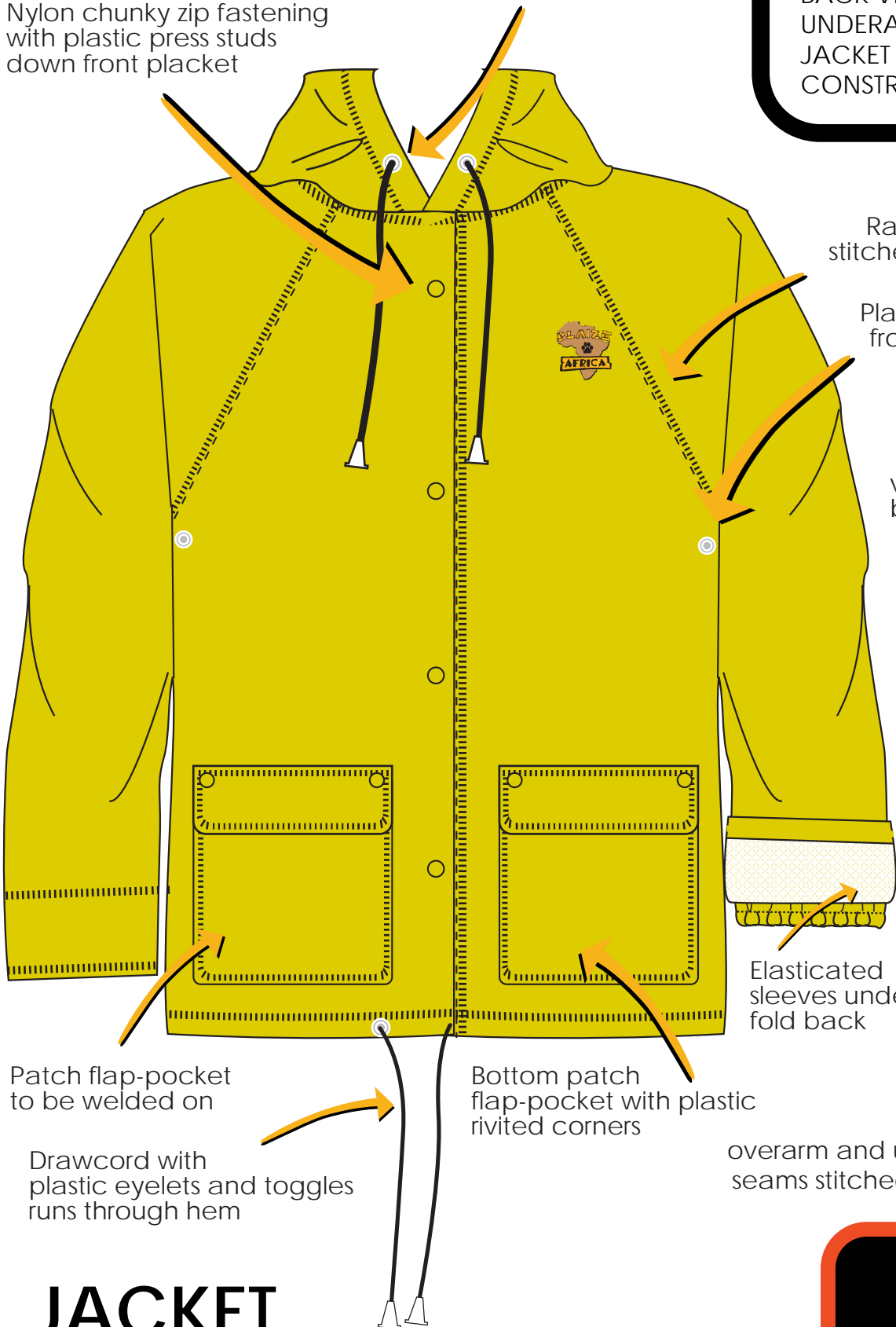




DESCRIPTION: YELLOW RAINSUIT JACKET
HOOD: PLASTIC RING HOLES & DRAWSTRING
CUFF: ELASTICATED INNER CUFF WELDED TO SLEEVE
PRESS STUDS: 4 YELLOW PLASTIC PRESS STUDS
ZIP: WHITE NYLON ZIP
POCKETS: 2 FRONT FLAP POCKETS
FLAP POCKETS: FASTENED WITH PLASTIC STOPPERS
BACK VENT: LARGE BACK VENT FOR EASE OF MOVEMENT
UNDERARM: PLASTIC RING WITH HOLE FOR VENTILATION
JACKET HEM: PLASTIC RING HOLES & DRAWSTRING
CONSTRUCTION: STITCHED AND WELDED ON ALL JOINS EXCEPT CUFF

Nylon chunky zip fastening with plastic press studs down front placket

Plastic eyelets with cord and plastic toggles



Raglan sleeve stitched and welded

Plastic eyelets at front underarm

vented back yoke

Elasticated sleeves under fold back

Patch flap-pocket to be welded on

Bottom patch flap-pocket with plastic riveted corners

Drawcord with plastic eyelets and toggles runs through hem

overarm and underarm side seams stitched and welded

- Nylon chunky Zip with metal slider
- Self-colour stitching on whole garment
- Self-colour plastic press studs
- Plastic eyelets

TEXTILE

PVC Coated Fabric

COLOURS

YELLOW 
NAVY 

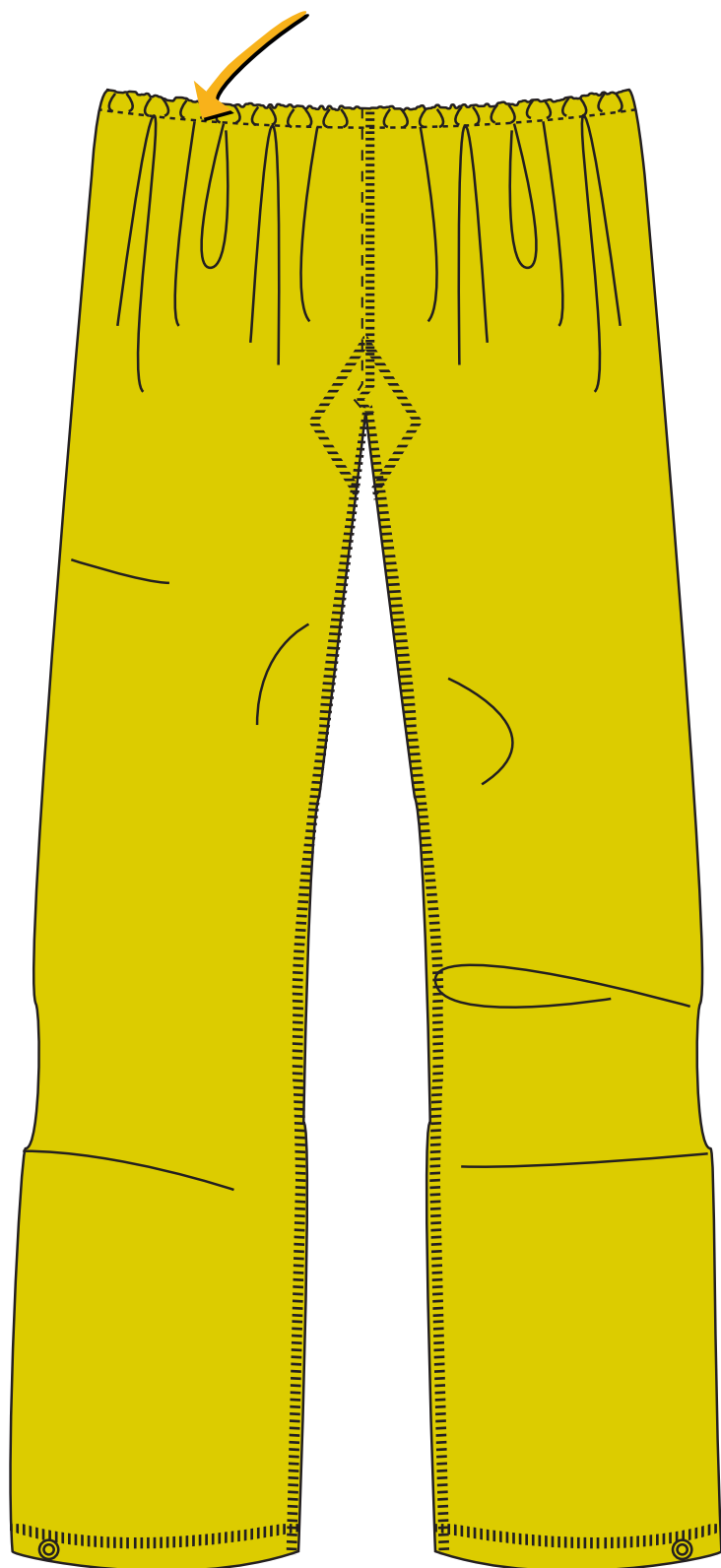
JACKET

RAINSUIT



DESCRIPTION: YELLOW RAINUIT TROUSER
WAISTBAND: ELASTICATED
CROTCH: RE-INFORCED WELD & STITCH WITH DIAMOND INSERT
BOTTOM HEM: WELDED ONLY, 1 PLASTIC PRESS STUD PER LEG

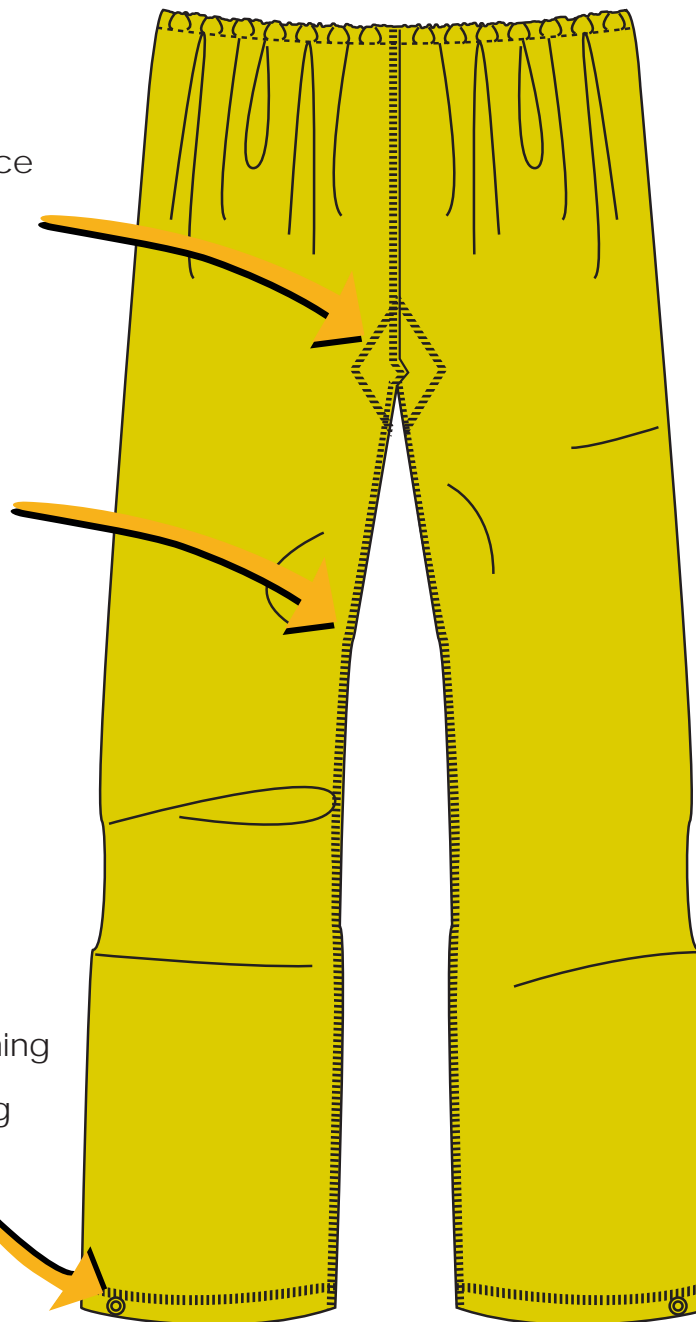
elasticated waist



diamond insert to reduce tension on crotch

welded and stitched inleg seams

plastic press stud fastening at outside leg hem, to reduce hem opening



- Self colour plastic press studs
- Elasticated waistband

TEXTILE

PVC coated fabric

COLOURS

YELLOW 

NAVY 

TROUSERS

RAINSUIT



MEASUREMENTS

DESCRIPTION	S	M	L	XL	2XL	3XL	4XL
CHEST LENGTH	125	128	132	137	142	147	152
BACK LENGTH	73	75	77	79	81	83	85
SLEEVE LENGTH	75	77	79	81	83	85	87
WAIST LENGTH	104	108	112	116	120	124	128
OUTSEAM LENGTH	107	110	113	116	119	122	125
INSEAM LENGTH	69	71	73	75	77	79	81

LABELS



BACK NECK LABEL
3cm x 3.5cm

CONSTRUCTION

BREAKING STRENGTH AT STITCH & JOIN
BREAKING STRENGTH AT JOIN

250N/mm ± 5% TOLERANCE
6N/mm ± 5% TOLERANCE

RAINSUIT