



COLLAR:
FRONTS

2 PIECE COLLAR 3mm EDGE STITCH
LAPEL 3mm EDGE STITCH. 3.5cm. STITCH
ON SELF PLAQUET

BACK:

1 PIECE BACK. SIDE SLIT

SLEEVE:

2cm ROLL HEM

BOTTOM HEM:

1.5cm ROLL HEM

POCKETS:

1 X TOP POCKET. 14 X 15cm. 2cm ROLL HEM
2 X BOTTOM PKTS. 15 X 18cm. 2cm ROLL HEM
POCKETS TO BE DOUBLE STITCHED.

FLAPS:

ALL POCKETS TO BE MITRED

POSTING:

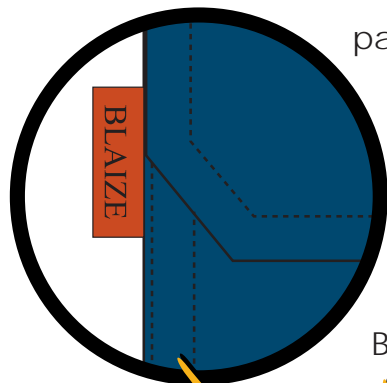
MITRED FLAP: IX DOUBLE STITCHED

BARTACKS:

SHOULDER, ARMHOLE

POCKETS, FLAPS, SIDE SLIT, BOTTOM OF ZIP

Single top mitred
patch pocket with flap.
Blaize sidewinder &
concealed stud

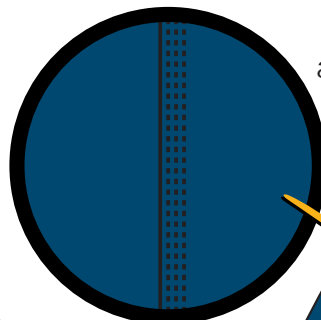


Concealed Press stud
and Zip front

NG9
Button

Front
Yoke

Posted armholes,
arms, shoulders and
side seams



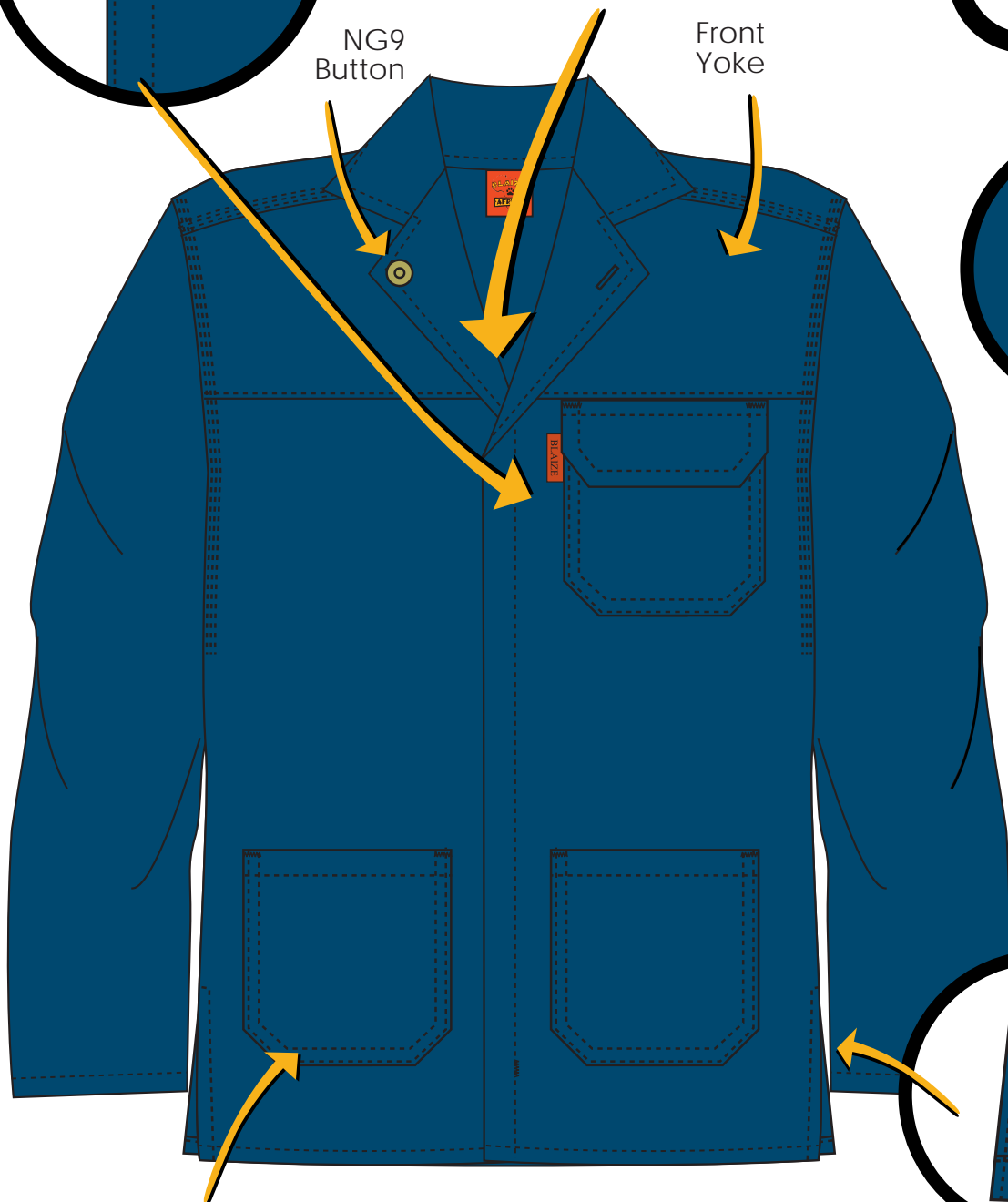
- Brass YKK zips
- All seams are posted
- Self-colour stitching on whole garment

TEXTILE

4/1 Twill
100% Cotton
310/320gsm
Satin Weave
Flame Retardant

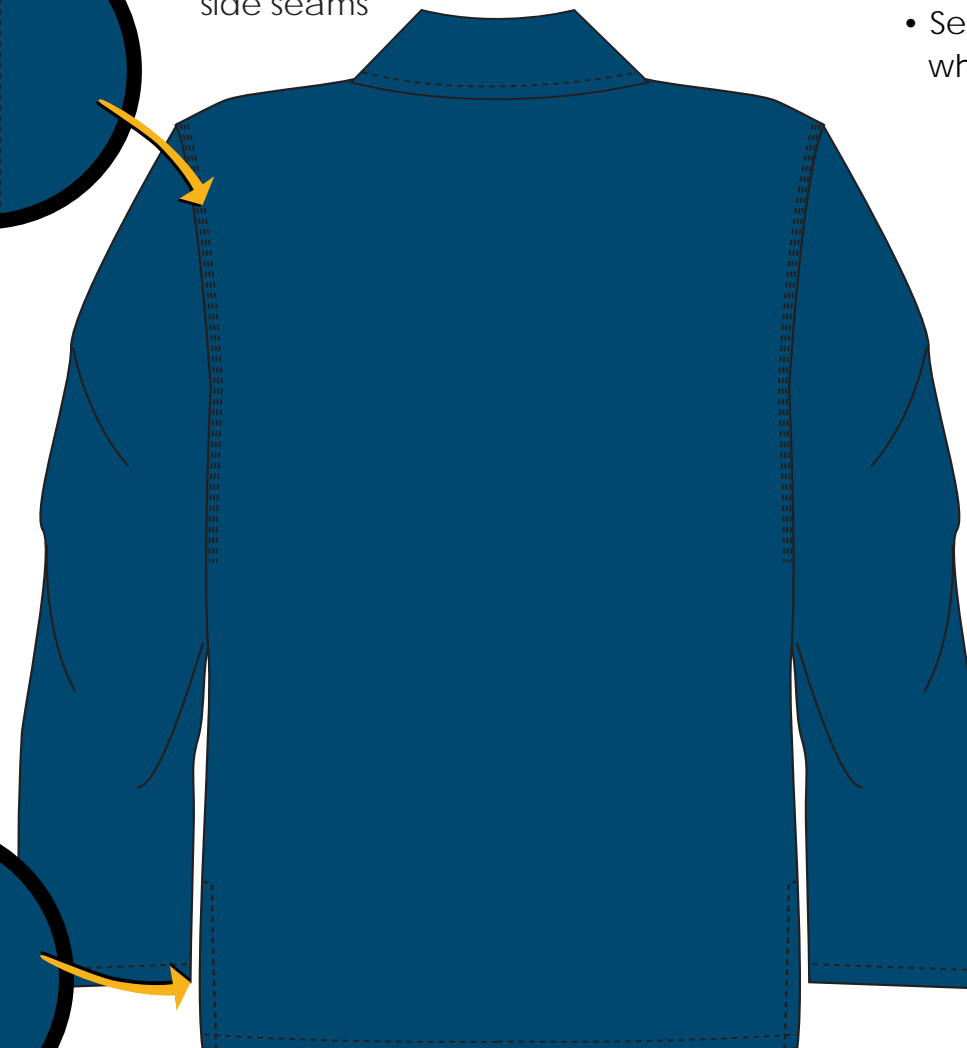
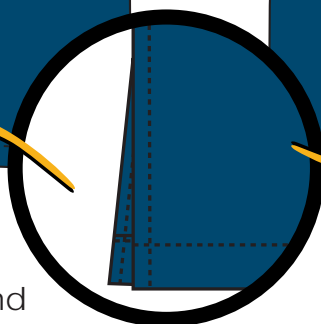
COLOURS

NAVY



Mitred patch
pockets with flaps

Side slit seam and
underneath of sleeve
is safety stitched

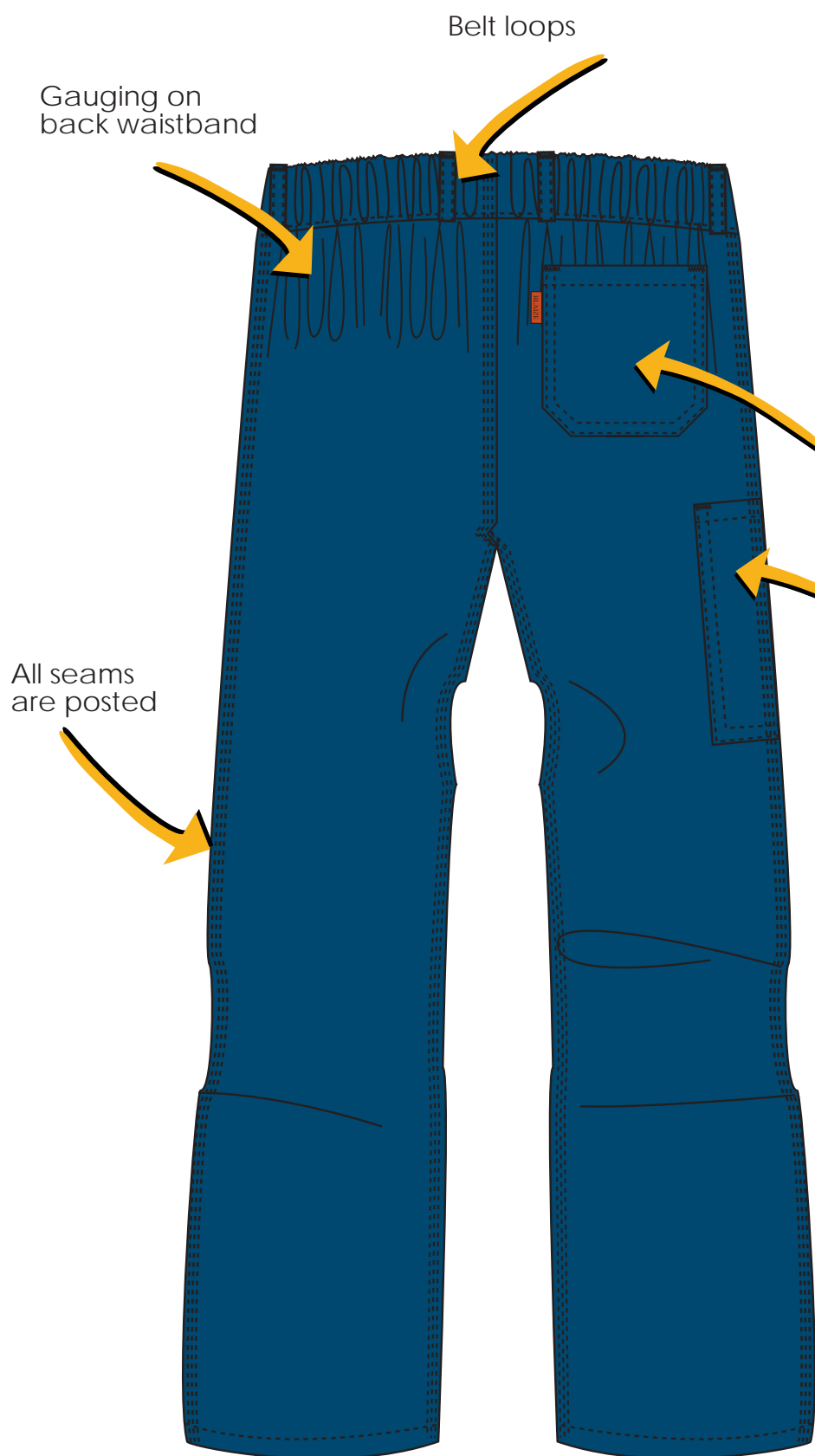


JACKET

FLAME RETARDANT CONTI SUIT

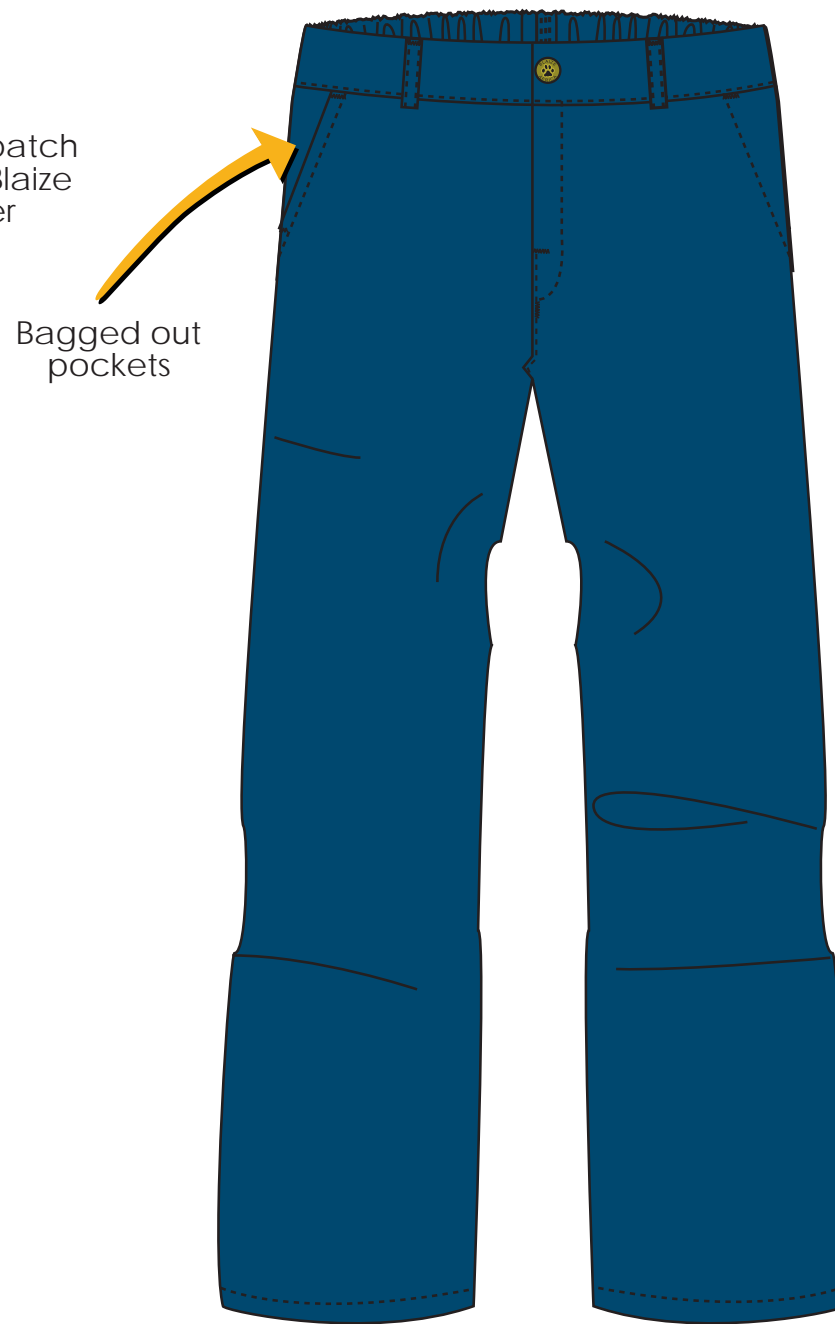


WAISTBAND: 4cm FINISH, ELASTICATED BACK
LOOPS: 6cm IN LENGTH. SZ 34 AND BELOW, 5 LOOPS
SZ 36 ONWARDS, 7 LOOPS
POCKETS: 1 x BACK POCKET. 15 x 18cm. 2cm ROLL HEM
RULER POCKET. 8 x 18cm. 1cm ROLL HEM
DOUBLE STITCHED. FRONT POCKET MOUTH TO
BE 17cm
FLY: 3.5cm WIDE FINISH DOUBLE STITCHED
POSTING: CENTRE BACKS, INLEGS AND OUTLEGS
BARTACKS: POCKETS, FLY, FRONT POCKETS MOUTH
AND CROTCH



Mitrated back patch
pocket with Blaize
sidewinder

Ruler pocket



- Brass YKK zips
- All seams are posted
- Self-colour stitching on whole garment

TEXTILE

4/1 Twill
100% Cotton
310/320gsm
Satin Weave
Flame Retardant

COLOURS



NAVY

TROUSERS

FLAME RETARDANT CONTI SUIT



JACKET

SIZE (A)	CHEST SIZE	BACK LENGTH (B)	BACK WIDTH	SHORT SLEEVES	LONG SLEEVES (C)	CUFF, PLAIN & RUCHED EXC (D)
77	94	70	36	13	447	27
82	99	71	38	13	47	27
87	104	72	40	13	48	27
92	109	73	42	14	48	28
97	114	74	44	14	49	28
102	119	74,5	46	14	49	28
107	124	75	48	15	50	29
112	129	75,5	50	15	50	29
117	134	76	52	15	51	29
122	139	76,5	54	16	51	30
127	144	77	56	16	52	30
132	149	77,5	58	16	52	30
137	154	78	60	17	53	31
142	159	78,5	62	17	53	31
147	164	79	64	17	54	31
152	169	79,5	66	18	54	32
157	174	80	68	18	54	32

A: CHEST, GIRTH AND WAIST BASED IN CENTIMETERS OF THE INTENDED WEARER (SANS 1360-1)

B: JACKETS WITH BOTTOM BANDS ARE SHORTENED BY 10CM

C: MEASURED AT THE UNDERARM

D: RELAXED MEASUREMENT

NOMINAL MEASUREMENTS OF GARMENT FINISHED IN CM

TROUSER

SIZE	OUTSIDE LEG LENGTH	INSIDE LEG LENGTH	WAIST EXT	SEAT SIZE	BOTTOM SIZE	FRONT RISE EXC WAISTBAND	BACK RISE EXC WAISTBAND
77/67	102	78	80	92	42	26	35
82/72	104	79	85	97	44	27	36
87/77	106	80	90	102	46	28	37
92/82	108	81	95	107	48	29	38
97/87	110	82	100	112	50	30	39
102/92	110	82	105	117	50	30	39
107/97	111	82	110	122	50	31	40
112/102	111	82	115	127	50	31	40
117/107	111	81	120	132	51	32	41
122/112	111	81	125	137	51	32	41
127/117	111	80	130	142	51	33	42
132/122	111	80	135	147	51	33	42
137/127	112	80	140	152	52	34	43
142/132	112	80	145	157	52	34	43
147/137	113	80	150	162	52	35	43
152/142	113	80	155	167	52	35	44
157/147	113	80	160	172	52	36	45

A: CHEST, GIRTH AND WAIST BASED IN CENTIMETERS OF THE INTENDED WEARER (SANS 1360-1)

C: RELAXED MEASUREMENT OF RUCHED WAIST FOR SAFETY AND COMFORT

EG. 102/92 FITS CHEST 102CM AND WAIST 92CM

B: JACKETS WITH BOTTOM BANDS ARE SHORTENED BY 10CM

NOMINAL MEASUREMENTS OF GARMENT FINISHED IN CM

FLAME RETARDANT CONTI SUIT

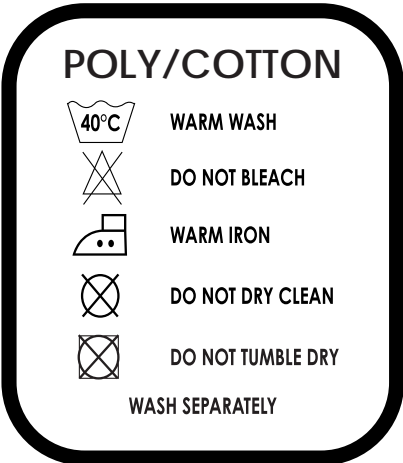


LABELS

MAIN LABEL:	JACKET NECK
WASH CARE:	JACKET NECK (UNDER) PANTS CENTRE W/B
I.D LABELS:	JACKET NECK (UNDER) CENTRE W/B (UNDER)
SIZE TAG:	JACKET NECK PANTS FLY
BUTTONS:	JACKET ONE, PANTS ONE
THREAD:	MATCHING
PRESS STUDS:	JACKET ONE
ZIP:	AUMINIUM SZ 34 - DOWNWARD ON TRS 14CM SZ 36 - UPWARD ON TRS 18CM JACKETS 45CM



CENTRE BACK LABEL
3cm x 3.5cm



WASHCARE LABEL



SWINGTAG
8cm X 5.5cm



SWINGTAG 8cm x 5cm



SIDE WINDER
3cm x 2cm

FLAME RETARDANT CONTI SUIT